



Product Brief: ADDRESSmanager

ADDRESSmanager® provides address information more precise than geocoding

ADDRESSmanager® increases the speed and accuracy of determining business and residential serviceability. ADDRESSmanager provides the best possible address location by combining engineering, mapping and billing system information and business intelligence resources.

Accurate application that utilizes actual engineering maps to calculate serviceability and measure the distance to plant

The Most Accurate Addresses For Serviceability

We don't just rely on the first address we find or even one source. SPATIALinfo knows that accurate information for both commercial and residential addresses is essential to:

- Providing quality customer service
- Timely cost-savings
- Increasing your customer base

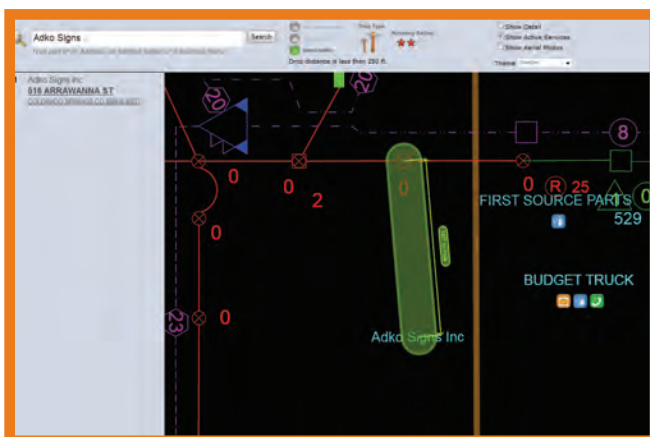
Our system bridges the missing information between the billing system, addresses in engineering maps, and intelligence sources by creating a single source of addresses.



Duplicates are removed, and records are merged together.

Addresses are also standardized according to United States Postal Service address standards, and Delivery Point Validated (DPV) to verify this address can accept mail.

The Best Resource Available For Calculating Serviceability



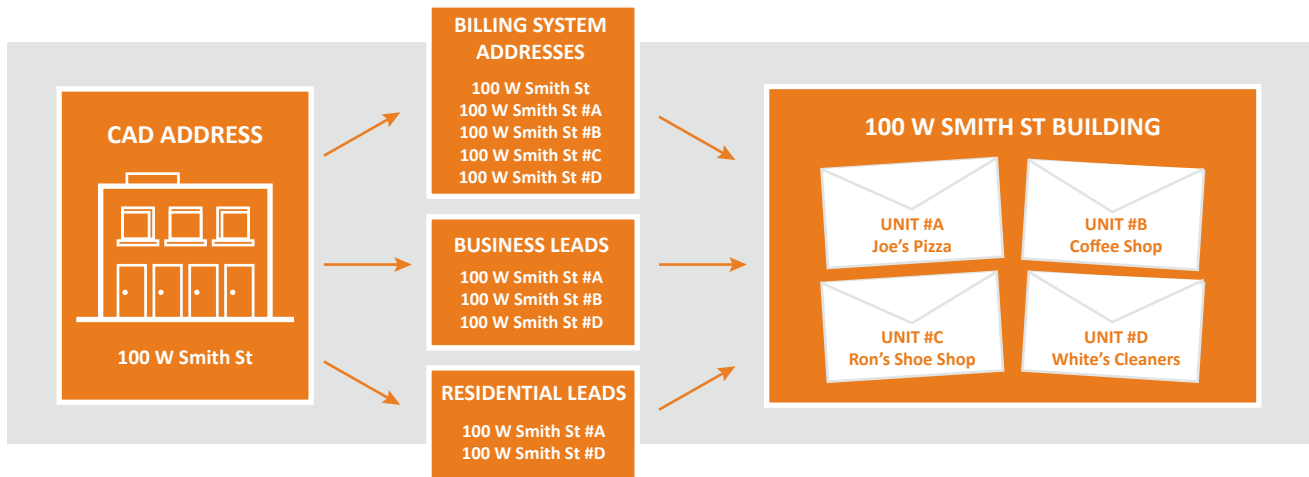
We use the actual engineering maps to calculate serviceability, measuring the distance to plant, instead of distance to the nearest existing customer. This gives you the addresses of commercial areas not yet known and ten times better location accuracy than standard geocoded addresses.

ADDRESSmanager can also determine serviceability in commercial areas, where no residential customers exist. This can provide your company with an increased opportunity to discover new customers in existing networks.

ADDRESSmanager makes finding commercial customers simple and easy.

ADDRESSmanager is designed to save you time and money and increase your serviceability accuracy.

- Increase accuracy of mass mailings to potential customers
- Reduce need for costly truck rolls
- Increase your customer base, both commercial and residential
- Improve customer service time and response to customer questions



To find out more about the benefits of implementing ADDRESSmanager, visit our website or contact us at enquiries@spatialinfo.com.